



**MOBILE SANITARY SYSTEMS**



# CONTENTS

## MOBILE SANITARY SYSTEMS FROM COSWIG (ANHALT) 3

### MODERN THERMOFORMING PRODUCTION 4

### PORTABLE TOILETS 5

|                     |    |
|---------------------|----|
| GLOBAL FOCUS        | 6  |
| GLOBAL MTM          | 8  |
| GLOBAL POLAR BASIC  | 9  |
| GLOBAL POLAR BALTIC | 10 |
| GLOBAL POLAR FRESH  | 11 |

### URINALS AND HAND WASH STATIONS 12

|                 |    |
|-----------------|----|
| GLO:PEE         | 14 |
| LAPEE           | 15 |
| GLOBAL DUO      | 16 |
| HYGIENE-KIT DUO | 17 |

### INSTALLATION TANKS AND HAND WASHING STANDS 18

|                    |    |
|--------------------|----|
| GLOBAL EKKO        | 20 |
| GLOBAL KOMBO       | 21 |
| GLOBAL FRESH FLUSH | 22 |
| GLOBAL 250L        | 22 |
| GLOBAL 320L        | 22 |
| GLOBAL REZI F      | 22 |
| GLOBAL FLEXITANK   | 23 |
| GLOBAL MULTI       | 23 |

### DEODORIZER, CLEANERS, HYGIENE AND

### AIR FRESHENERS 24

|                                    |    |
|------------------------------------|----|
| GLO:BLUE                           | 26 |
| GLO:EVENT/GLO:WINTER               | 26 |
| GLO:PACK                           | 27 |
| GLO:PACK EVENT/GLO:PACK WINTER     | 27 |
| GLO:PACK BIO                       | 27 |
| GLO:GRAFFITI-EX                    | 28 |
| GLO:MAGIC SPONGE                   | 28 |
| GLO:KALK-EX                        | 28 |
| GLO:CLEANY                         | 28 |
| GLO:FRESH                          | 29 |
| HAND DISINFECTION & SOAP (FOAMING) | 29 |

### GLOBAL SALES TEAM 30





# MOBILE SANITARY SYSTEMS FROM COSWIG (ANHALT)

|   |    |
|---|----|
| PORTABLE TOILETS                              | 5  |
| URINALS AND HAND WASH STATIONS                | 12 |
| INSTALLATION TANKS AND<br>HAND WASHING STANDS | 18 |

|   |    |
|---|----|
| DEODORIZER, CLEANERS, HYGIENE AND<br>AIR FRESHENERS | 24 |
|---|----|





# MODERN THERMOFORMING PRODUCTION

## CUTTING-EDGE TECHNOLOGY

We use state-of-the-art equipment from Geiss and COMI in our thermoforming production lines, leading to cost-efficient production of large-area plastic parts, high quality and increased throughput so that production peaks can also be better absorbed.

## LIGHTWEIGHT MATERIAL

We use HDPE (High-Density Polyethylene) as the primary material for production. Due to its product properties, such as high stability and tear resistance, HDPE enables us to realize very thin wall thicknesses, leading to weight savings and, for example, lower transport costs.

## HIGH DURABILITY

The HDPE components produced for our portable toilets are highly resistant to acids, alkalis and other chemicals such as cleaning agents, which makes cleaning the surfaces very straightforward.

## SUSTAINABILITY

With our large solar system on the production hall, we produce our own electricity, and we recycle 100 percent of all clean production residues into new raw material in our new shredder plant.



**We produce with  
solar energy!**

Up to  
**40 %**  
recycled  
content

## FULLY AUTOMATIC GEISS SINGLE SHEET LINE

▪ Year: 2021, Production use: Side parts and roofs of portable toilets



# PORTABLE TOILETS

|                    |   |                     |    |
|--------------------|---|---------------------|----|
| GLOBAL FOCUS       | 6 | GLOBAL POLAR BALTIC | 10 |
| GLOBAL MTM         | 8 | GLOBAL POLAR FRESH  | 11 |
| GLOBAL POLAR BASIC | 9 |                     |    |



FOCUS



MTM



POLAR BASIC



POLAR BALTIC



POLAR FRESH

## SPECIFICATIONS

|                 |                           |         |                 |                |                |
|-----------------|---------------------------|---------|-----------------|----------------|----------------|
| Interior height |                           |         | 2150 mm         | 2150 mm        | 2150 mm        |
| Exterior height | 2300 mm                   | 2200 mm | 2400 mm         | 2400 mm        | 2400 mm        |
| Interior width  |                           |         | 1050 mm         | 1050 mm        | 1050 mm        |
| Exterior width  | 1100 mm                   | 1100 mm | 1140 mm         | 1140 mm        | 1140 mm        |
| Interior depth  |                           |         | 1050 mm         | 1050 mm        | 1050 mm        |
| Exterior depth  | 1200 mm                   | 1200 mm | 1210 mm         | 1210 mm        | 1210 mm        |
| Weight          | 72 kg                     | 77,5 kg | approx. 140 kg  | approx. 150 kg | approx. 190 kg |
| Material        | UV-resistant polyethylene |         | Sandwich panels |                |                |

## STANDARD CONFIGURATION

|                              |   |   |   |   |   |
|------------------------------|---|---|---|---|---|
| Plastic tank GLOBAL 250L     | ■ | ■ | ■ | ■ | □ |
| Wall-mounted toilet, ceramic | □ | □ | □ | □ | ■ |
| Washbasin, ceramic           | □ | □ | □ | □ | ■ |
| Hand wash stand GLOBAL Ekko  | □ | □ | □ | ■ | □ |
| Urinal                       | ■ | ■ | □ | ■ | □ |
| Door latch                   | ■ | ■ | □ | □ | □ |
| Hover handle                 | □ | ■ | □ | □ | □ |
| Mirror, glass                | □ | □ | ■ | ■ | ■ |
| Mirror, metal                | ■ | ■ | □ | □ | □ |
| Paper roll holder            | ■ | ■ | ■ | ■ | ■ |
| Occupied/vacant indicator    | ■ | ■ | □ | □ | □ |
| Plastic pallet               | ■ | ■ | ■ | ■ | ■ |
| Door lock padlock            | ■ | ■ | □ | □ | □ |
| Door lock key                | □ | □ | ■ | ■ | ■ |
| 230 V Power connection       | □ | □ | □ | ■ | ■ |
| Lighting with motion sensor  | □ | □ | ■ | ■ | ■ |
| Heating 500 W                | □ | □ | ■ | ■ | ■ |
| Fresh water connection 3/4"  | □ | □ | □ | □ | ■ |
| Waste water connection DN110 | □ | □ | □ | □ | ■ |



# GLOBAL FOCUS

- 01 NEW ROOF DESIGN**  
for better securing with lashing straps and handle  
for easier moving and loading
- 02 EXTREMELY DURABLE DOOR SPRING**  
tested over 30,000 times, easy to replace
- 03 WIDER AND HIGHER DOOR**  
more accessible and user-friendly
- 04 ADJUSTABLE CLOSING MECHANISM**  
practical in strong winds
- 05 REDESIGNED PALLET**  
more stable, more durable, easier to clean



**MADE IN  
COSWIG  
GERMANY**

**DIN**  
EN 16914

**LIGHT  
WEIGHT  
PE.**



The new evolutionary stage of our portable toilets. A completely new design with a focus on better handling, easier transport, higher durability and improved details.

## SPECIFICATIONS

|           |                           |
|-----------|---------------------------|
| Height:   | 2300 mm                   |
| Width:    | 1100 mm                   |
| Depth:    | 1200 mm                   |
| Weight:   | 72 kg                     |
| Material: | UV-resistant polyethylene |

## STANDARD CONFIGURATION

Urinal, tank GLOBAL 250L, plastic pallet, translucent roof, self-closing door with occupied/vacant indicator, lockable from the outside, black corner strips

## AVAILABLE COLORS

GLOBAL Blue, light blue, dark green, light green, red, yellow, orange, purple, pink, sand, aqua, light gray, dark gray, white





**TRANSPORT HANDLE**  
for easier handling



**FOOT TREADLE**  
for easier tipping



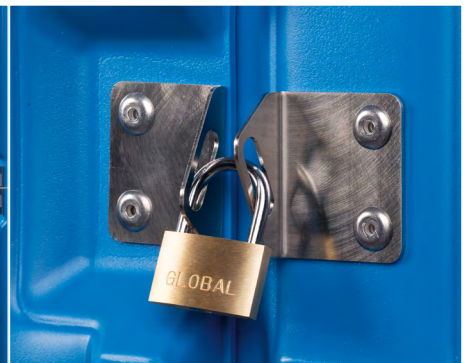
**HEAVY-DUTY HINGES**  
now easier to install and more durable



**CLOSING MECHANISM**  
all-new design and adjustable



**NEW DOOR**  
wider, higher and more sturdy



**REVISED DETAILS**  
for better handling and more comfort





# GLOBAL MTM



- 01 REINFORCED FRONT**  
robust, even under heavy use
- 02 PERIMETER DOOR FRAME**  
provides increased stability
- 03 LARGE DOOR LATCH**  
can be operated without using the hands
- 04 SMOOTH OUTER SURFACE**  
for easy attachment of advertising
- 05 YOUR LOGO**  
can be molded into the side panels



**MADE IN  
COSWIG  
GERMANY**

**DIN**  
EN 16914

**LIGHT  
WEIGHT  
PE.**



Rugged construction and compact design makes the cabin perfect for heavy-duty applications such as construction sites and festivals.

## SPECIFICATIONS

|           |                           |
|-----------|---------------------------|
| Height:   | 2200 mm                   |
| Width:    | 1100 mm                   |
| Depth:    | 1200 mm                   |
| Weight:   | 77,5 kg                   |
| Material: | UV-resistant polyethylene |

## STANDARD CONFIGURATION

Urinal, tank GLOBAL 250L, plastic pallet, translucent roof, self-closing door with occupied/vacant indicator, lockable from the outside, black/white corner strips

## AVAILABLE COLORS

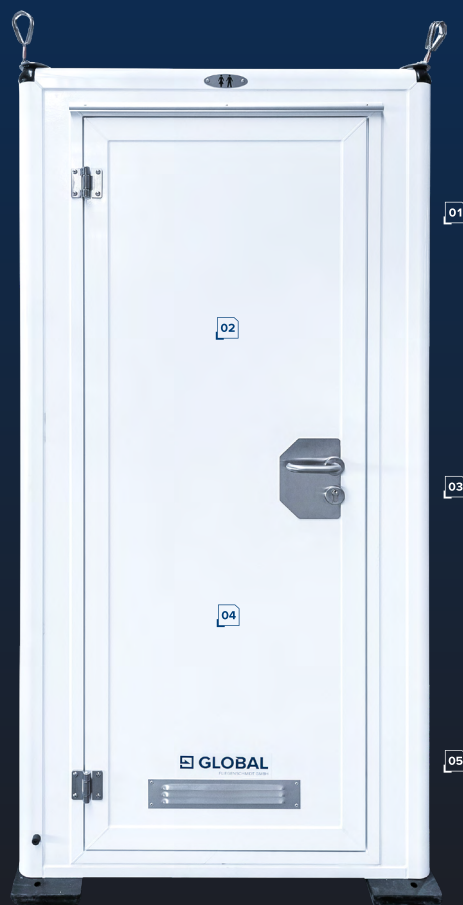
GLOBAL Blue, light blue, dark green, light green, red, yellow, orange, purple, pink, sand, aqua, light gray, dark gray, white





# GLOBAL POLAR BASIC

- 01 CONNECTION-FREE, AUTARKIC OPERATION**  
using lightweight plastic tanks
- 02 ISOLATED CABIN**  
with 33 mm thick sandwich panels made in-house
- 03 500 W HEATER**  
in standard configuration
- 04 BATTERY-OPERATED LIGHTING**  
with motion sensor
- 05 SMOOTH OUTER SURFACE**  
for easy attachment of advertising



**MADE IN  
DÖBELN  
GERMANY**

**DIN**  
EN 16914



A cost-effective and lightweight version of an isolated portable toilet. Equipped with a lightweight plastic tank for connection-free operation.

## SPECIFICATIONS

|           |                                       |
|-----------|---------------------------------------|
| Height:   | 2400 mm                               |
| Width:    | 1140 mm                               |
| Depth:    | 1210 mm                               |
| Weight:   | approx. 140 kg                        |
| Material: | Sandwich panels, 33 mm Wall thickness |

## STANDARD CONFIGURATION

Tank GLOBAL 250L, plastic pallet, paper roll holder, mirror, 500 W heating

## AVAILABLE COLORS

White

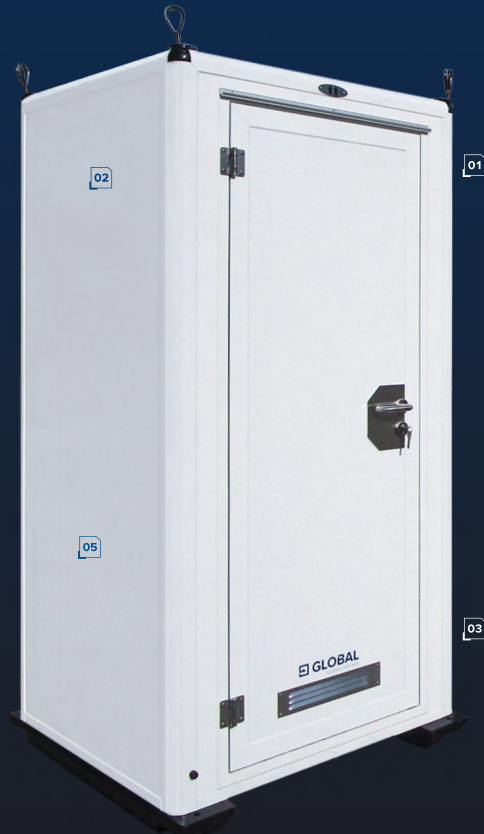


# GLOBAL POLAR BALTIC

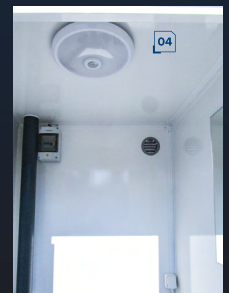


**DIN**  
EN 16914

- 01** CONNECTION-FREE, AUTARKIC OPERATION  
using lightweight plastic tanks
- 02** ISOLATED CABIN  
with 33 mm thick sandwich panels made in-house
- 03** 500 W HEATER  
in standard configuration
- 04** LIGHTING 230 V  
with motion sensor
- 05** SMOOTH OUTER SURFACE  
for easy attachment of advertising



Also available  
with GLOBAL Rezi F  
recirculation tank!



Model version with a lightweight 250 liter plastic tank for connection-free operation, hand washing facility, urinal and 500W heating.

## SPECIFICATIONS

|           |                                       |
|-----------|---------------------------------------|
| Height:   | 2400 mm                               |
| Width:    | 1140 mm                               |
| Depth:    | 1210 mm                               |
| Weight:   | approx. 150 kg                        |
| Material: | Sandwich panels, 33 mm Wall thickness |

## STANDARD CONFIGURATION

Urinal, tank GLOBAL 250L, GLOBAL Ekko hand washing stand, plastic pallet, paper roll holder, mirror, 500W heating, 230 V power connection, lighting with motion sensor

## AVAILABLE COLORS

White



# GLOBAL POLAR FRESH

MADE IN  
DÖBELN  
GERMANY

DIN  
EN 16914

- 01** FRESH WATER CONNECTION  
and ceramic fittings for more comfort
- 02** ISOLATED CABIN  
with 33 mm thick sandwich panels made in-house
- 03** 500 W HEATER  
in standard configuration
- 04** DEKRA-APPROVED CRANE HOOKS  
ensure safe and fast loading
- 05** SMOOTH OUTER SURFACE  
for easy attachment of advertising



The premium version of our GLOBAL Polar portable toilet. Equipped with a toilet and ceramic washbasin, electric and fresh water connections, and heating. Perfect for customers with high standards.

## SPECIFICATIONS

|           |                                       |
|-----------|---------------------------------------|
| Height:   | 2400 mm                               |
| Width:    | 1140 mm                               |
| Depth:    | 1210 mm                               |
| Weight:   | approx. 190 kg                        |
| Material: | Sandwich panels, 33 mm Wall thickness |

## STANDARD CONFIGURATION

Wall-hung ceramic toilet and washbasin, mirror, toilet paper holder, toilet brush, fresh water/waste water/electricity connection, 500 W heating

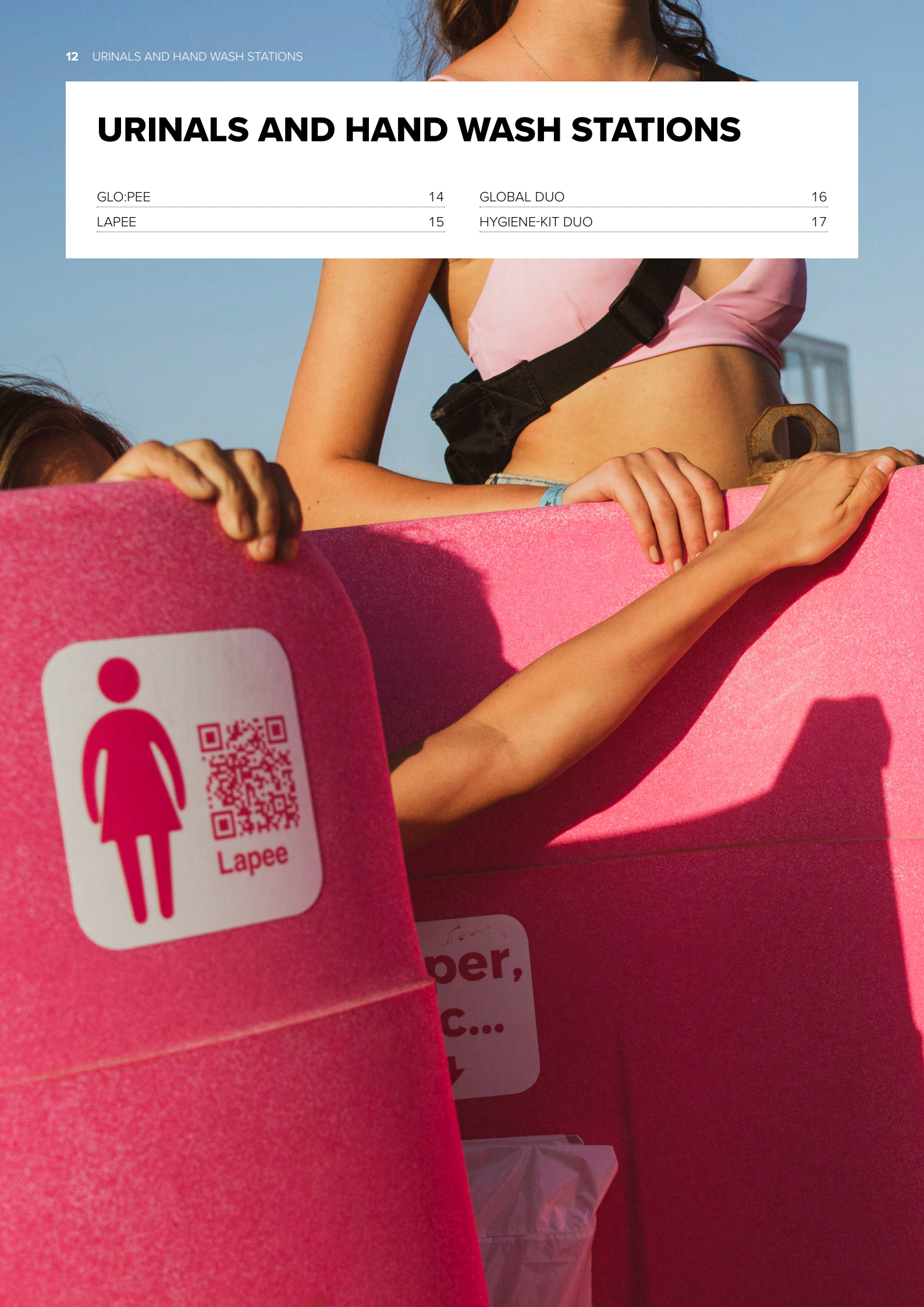
## AVAILABLE COLORS

White



# URINALS AND HAND WASH STATIONS

|         |    |                 |    |
|---------|----|-----------------|----|
| GLO:PEE | 14 | GLOBAL DUO      | 16 |
| LAPEE   | 15 | HYGIENE-KIT DUO | 17 |







GLO:PEE



LAPEE



DUO

SPECIFICATIONS

|                      |                           |         |         |
|----------------------|---------------------------|---------|---------|
| Height               | 1750 mm                   | 1700 mm | 1150 mm |
| Width                | 1200 mm                   | 2250 mm | 1100 mm |
| Depth                | 1200 mm                   | 2250 mm | 600 mm  |
| Weight               | 40 kg                     | 200 kg  | 40 kg   |
| Capacity fresh water | —                         | —       | 160 l   |
| Capacity waste water | 400 l                     | 1100 l  | 160 l   |
| Material             | UV-resistant polyethylene |         |         |

PRODUCT FEATURES

|                              |   |   |   |
|------------------------------|---|---|---|
| Stackable for transportation | ■ | ■ | ■ |
|------------------------------|---|---|---|



# GLO:PEE

- 01** ENHANCED PRIVACY  
through a revised design
- 02** SPACE FOR 4 PEOPLE AT ONE URINAL  
for a higher throughput
- 03** DRINKS HOLDERS  
so that the really important things don't get spilt
- 04** TWO-PART DESIGN  
for space- and cost-saving transportation, and  
stackable in 4 layers without jamming
- 05** 400 LITER WASTE WATER TANK  
for longer periods of use
- 06** LOCKING MECHANISM  
with square key



MADE IN  
COSWIG  
GERMANY

LIGHT  
WEIGHT  
**PE.**



Free-standing urinal in a fresh design with space for four users and drink holders. The eye-catcher at every festival and event. Space-saving transport thanks to its two-part and stackable design.

## SPECIFICATIONS

|           |                           |
|-----------|---------------------------|
| Height:   | 1750 mm                   |
| Width:    | 1200 mm                   |
| Depth:    | 1200 mm                   |
| Weight:   | 40 kg                     |
| Material: | UV-resistant polyethylene |

## AVAILABLE COLORS

GLOBAL Blue, light blue, dark green, light green, red, yellow, orange, purple, pink, sand, aqua, light gray, dark gray, white



# LAPEE



LIGHT  
WEIGHT  
**PE.**

- 01** 3 SPACES PER URINAL  
for high throughput
- 02** REDUCING WAITING TIMES  
in the ladies' toilets
- 03** STACKABLE  
for space- and cost-saving transportation
- 04** NOT OBSERVABLE  
when used to protect privacy



Lapee is based on the vision of providing women with better sanitary conditions when other toilets are overcrowded. The urinal, with its modern design, offers space for three female users and can also be stacked for transportation.

## SPECIFICATIONS

|           |                           |
|-----------|---------------------------|
| Height:   | 1700 mm                   |
| Width:    | 2250 mm                   |
| Depth:    | 2250 mm                   |
| Weight:   | 200 kg                    |
| Material: | UV-resistant polyethylene |

## AVAILABLE COLORS

Pink

# GLOBAL DUO

- 01 TWO WASHBASINS**
- 02 EASY-TO-CLEAN WATER TANKS**  
that are easy to remove
- 03 STACKABLE IN TWO**  
enables transportation of 4 GLOBAL Duo per  
cabin space
- 04 ROBUST CARRYING HANDLES**  
for better handling and load securing
- 05 HIGH-QUALITY FOOT PUMP**  
for managing the water flow



**MADE IN  
COSWIG  
GERMANY**

**LIGHT  
WEIGHT  
PE.**



Free-standing, portable hand washing station with space for two users at the same time. With integrated handles that also serve to secure the load. Stackable for transport, four GLOBAL Duo can be effectively transported in the space of a portable toilet.

## SPECIFICATIONS

|                       |                           |
|-----------------------|---------------------------|
| Height:               | 1150 mm                   |
| Width:                | 1100 mm                   |
| Depth:                | 800 mm                    |
| Capacity fresh water: | 160 l                     |
| Capacity waste water: | 160 l                     |
| Weight:               | 40 kg                     |
| Material:             | UV-resistant polyethylene |

## STANDARD CONFIGURATION

Soap dispenser, removable tanks, padlock

## AVAILABLE COLORS

Gray



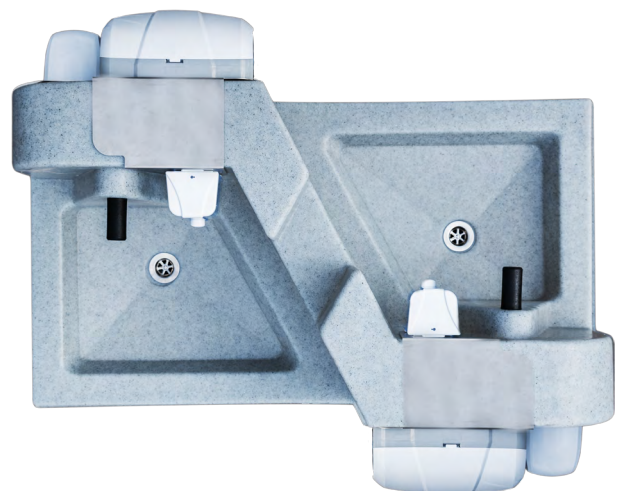
# HYGIENE-KIT DUO



- 01 EASY RETROFITTING**  
for every GLOBAL Duo hand washing station
- 02 SPACE-SAVING TRANSPORTATION**  
in the tanks of the hand washing station
- 03 THOROUGH HYGIENE**  
with soap dispenser, disinfectant dispenser and paper towel dispenser



The retrofit kit consists of a soap dispenser, a disinfectant dispenser and a paper towel dispenser and can be securely attached to any GLOBAL Duo with a wing screw.





# INSTALLATION TANKS AND HAND WASHING STANDS

|                    |    |
|--------------------|----|
| GLOBAL EKKO        | 20 |
| GLOBAL KOMBO       | 21 |
| GLOBAL FRESH FLUSH | 22 |
| GLOBAL 250L        | 22 |

|                  |    |
|------------------|----|
| GLOBAL 320L      | 22 |
| GLOBAL REZI F    | 22 |
| GLOBAL FLEXITANK | 23 |
| GLOBAL MULTI     | 23 |



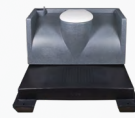




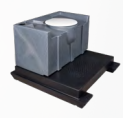
EKKO



KOMBO



250L



320L

#### SPECIFICATIONS

|                      |                           |         |         |         |
|----------------------|---------------------------|---------|---------|---------|
| Height               | 1200 mm                   | 1200 mm | 520 mm  | 520 mm  |
| Width                | 600 mm                    | 900 mm  | 1040 mm | 1040 mm |
| Depth                | 250 mm                    | 250 mm  | 600 mm  | 600 mm  |
| Weight               | 9 kg                      | 9 kg    | 14 kg   | 14 kg   |
| Capacity fresh water | 35 l                      | 45 l    | —       | —       |
| Capacity waste water | —                         | —       | 250 l   | 320 l   |
| Material             | UV-resistant polyethylene |         |         |         |

#### AVAILABLE IN

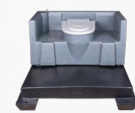
|         |   |   |   |   |
|---------|---|---|---|---|
| Gray    | ■ | ■ | ■ | □ |
| Granite | ■ | ■ | ■ | ■ |



FRESH FLUSH



REZI F



MULTI



FLEXITANK

#### SPECIFICATIONS

|                      |                           |         |         |        |
|----------------------|---------------------------|---------|---------|--------|
| Height               | 1200 mm                   | 615 mm  | 520 mm  | 500 mm |
| Width                | 1040 mm                   | 1030 mm | 1040 mm | 700 mm |
| Depth                | 1000 mm                   | 640 mm  | 620 mm  | 550 mm |
| Weight               | 22 kg                     | 14 kg   | 14 kg   | 10 kg  |
| Capacity fresh water | 100 l                     | —       | —       | —      |
| Capacity waste water | 200 l                     | 185 l   | 180 l   | 110 l  |
| Material             | UV-resistant polyethylene |         |         |        |

#### AVAILABLE IN

|         |   |   |   |   |
|---------|---|---|---|---|
| Gray    | □ | ■ | ■ | ■ |
| Granite | ■ | □ | □ | ■ |



# GLOBAL EKKO

## 01 SLIM DESIGN

allows flexible positioning in the toilet cabin

## 02 HYGIENIC OPERATION

via high-quality foot pump

## 03 EASY FILLING

via the filler neck positioned at the top of the 35-liter fresh water tank

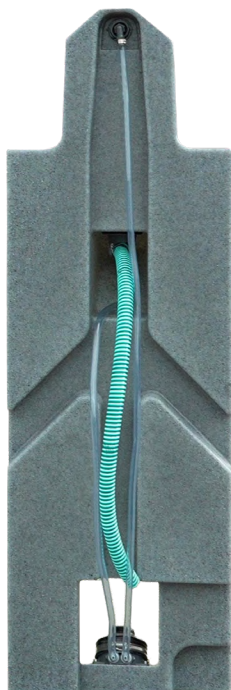
## 04 WASTE WATER

drains directly into the toilet tank



MADE IN  
COSWIG  
GERMANY

LIGHT  
WEIGHT  
**PE.**



Slim hand washing stand for installation in portable toilets. Operated by a high-quality foot pump, waste water is drained directly into the toilet tank.

### SPECIFICATIONS

|           |                           |
|-----------|---------------------------|
| Height:   | 1200 mm                   |
| Width:    | 385 mm                    |
| Depth:    | 250 mm                    |
| Weight:   | 9 kg                      |
| Capacity: | 35 l                      |
| Material: | UV-resistant polyethylene |

### AVAILABLE COLORS

Gray, Granite

# GLOBAL KOMBO

MADE IN  
COSWIG  
GERMANY

LIGHT  
WEIGHT  
**PE.**

- 01** COMPACT DESIGN  
for easy installation in portable toilets
- 02** HYGIENIC OPERATION  
via high-quality foot pump
- 03** WATER-FLUSHED URINAL  
for improved cleanliness
- 04** EASY FILLING  
via the filler neck positioned at the top of the  
45-liter fresh water tank
- 05** WASTE WATER  
drains directly into the toilet tank



Space-saving 2-in-1 combination of hand washing stand and urinal. Operating the high-quality foot pump simultaneously flushes the urinal and allows you to wash your hands. Waste water is drained directly into the toilet tank.

## SPECIFICATIONS

|           |                           |
|-----------|---------------------------|
| Height:   | 1200 mm                   |
| Width:    | 670 mm                    |
| Depth:    | 250 mm                    |
| Weight:   | 9 kg                      |
| Capacity: | 45 l                      |
| Material: | UV-resistant polyethylene |

## AVAILABLE COLORS

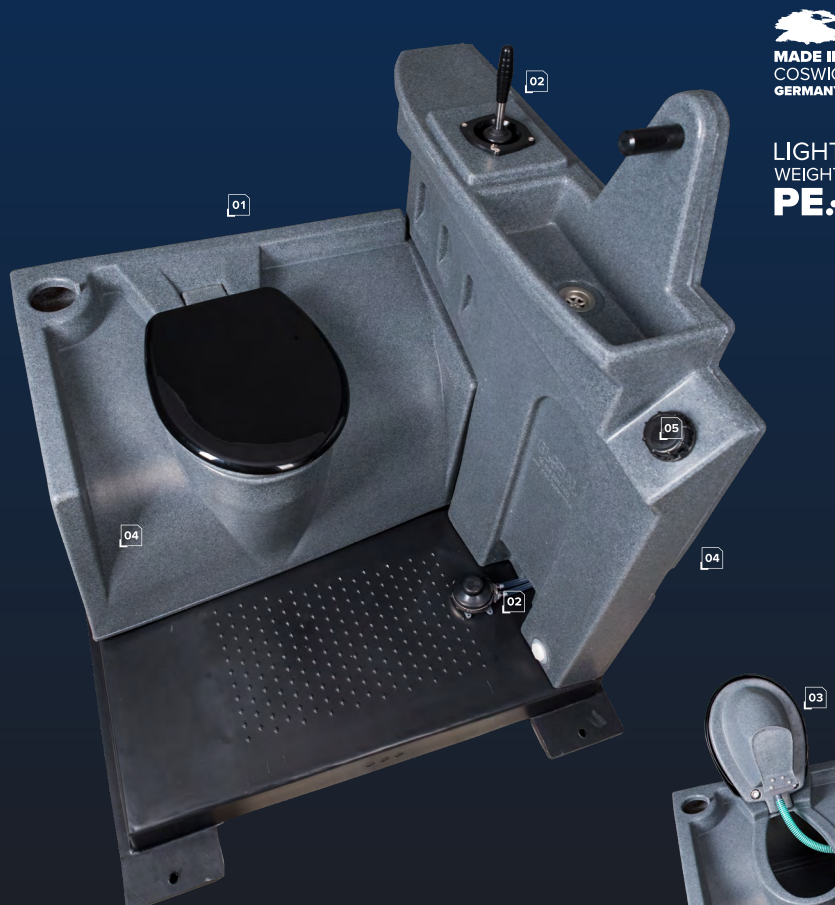
Gray, Granite





# GLOBAL FRESH FLUSH

- 01 2 IN 1 COMBINATION**  
of fresh water flush tank and hand washing stand
- 02 FRESH WATER FLUSHING**  
via high-quality hand and foot pumps
- 03 TANK CONTENTS NOT VISIBLE**  
due to the sight guard in the toilet seat
- 04 SUFFICIENT CAPACITY**  
of 100 liters of fresh water and 200 liters of waste water
- 05 EASY FILLING**  
via the filler neck positioned at the top of the fresh water tank



MADE IN  
COSWIG  
GERMANY

LIGHT  
WEIGHT  
**PE.**



## GLOBAL 250L

Standard installation tank

- 250 liter capacity
- Recessed suction point
- Easy to clean
- Edgeless interior



## GLOBAL 320L

Large installation tank

- 320 liter capacity
- Longer cleaning intervals
- Recessed suction point
- Easy to clean
- Edgeless interior



## GLOBAL REZI F

Recirculation tank with foot pump

- 185 liter capacity
- High-quality foot pump
- Privacy screen prevents tank viewing
- Recessed suction point
- Easy to clean
- Edgeless interior

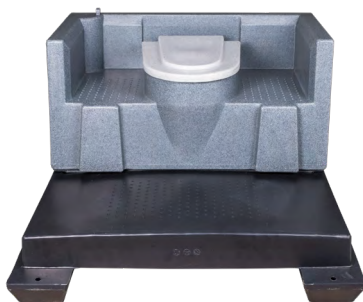


# GLOBAL FLEXITANK

MADE IN  
COSWIG  
GERMANY

LIGHT  
WEIGHT  
**PE.**

- 01 EASY TO TRANSPORT**  
even to hard-to-reach places
- 02 FLEXIBLE USE**  
inside and outside portable toilets
- 03 CAN BE SEALED FOR TRANSPORTATION**  
with rubber lid
- 04 SUFFICIENT CAPACITY**  
for 110 liters of waste water



## GLOBAL MULTI

Tank for squat and sit use

- 180 liter capacity
- Non-slip surface
- Recessed suction point
- Easy to clean
- Edgeless interior



# DEODORIZER, CLEANERS, HYGIENE AND AIR FRESHENERS

|                                |    |                                      |    |
|--------------------------------|----|--------------------------------------|----|
| GLO:BLUE                       | 26 | GLO:MAGIC SPONGE                     | 28 |
| GLO:EVENT/GLO:WINTER           | 26 | GLO:CLEANY                           | 28 |
| GLO:PACK                       | 27 | GLO:KALK-EX                          | 28 |
| GLO:PACK BIO                   | 27 | GLO:FRESH                            | 29 |
| GLO:PACK EVENT/GLO:PACK WINTER | 27 | HANDDESINFEKTION & SEIFE (SCHÄUMEND) | 29 |
| GLO:GRAFFITI-EX                | 28 |                                      |    |





GLO:BLUE EASY


GLO:EVENT/  
GLO:WINTER


GLO:PACK



GLO:FRESH



GLO:KALKEX



GLO:GRAFFITI-EX

## SCENTS

|              |   |   |   |   |   |   |
|--------------|---|---|---|---|---|---|
| Cherry       | ■ | □ | ■ | ■ | □ | □ |
| Bubble Gum   | ■ | □ | ■ | ■ | □ | □ |
| Mulberry     | ■ | □ | □ | ■ | □ | □ |
| Black Forest | ■ | ■ | □ | ■ | □ | □ |
| Candy        | □ | ■ | □ | □ |   |   |
| Exotic       | ■ | □ | □ | ■ | □ | □ |
| Red Berry    | □ | □ | ■ | □ | □ | □ |
| Neutral      | □ | □ | □ | □ | ■ | ■ |

## PACKAGING SIZES

|                         |   |   |   |   |   |   |
|-------------------------|---|---|---|---|---|---|
| 0,5 liters              | □ | □ | □ | □ | □ | ■ |
| 1 liter                 | □ | □ | □ | ■ | □ | □ |
| 30 liters (canister)    | ■ | ■ | □ | ■ | ■ | □ |
| 210 liters (drum)       | ■ | ■ | □ | ■ | □ | □ |
| 1041 liters (IBC)       | ■ | ■ | □ | □ | □ | □ |
| 80/100 sachets (in bag) | □ | □ | ■ | □ | □ | □ |
| 500 sachets (in box)    | □ | □ | ■ | □ | □ | □ |

# GLO:BLUE

Liquid deodorizer.  
Highly concentrated. Efficient.  
Economical.

- ◆ GLO:BLUE EASY – HIGH CONCENTRATE  
Can be used year-round, consistently effective at high temperatures and heavy use
- ◆ GLO:EVENT/GLO:WINTER  
Higher fragrance content for heavy use, short event/service intervals or winter temperatures
- ◆ EXCELLENT ODOR CONTROL
- ◆ DEEP BLUE, WASHABLE COLOR
- ◆ 100 % BIODEGRADABLE



| Recommended dosage   | Temperatures | GLO:BLUE EASY | GLO:EVENT/GLO:WINTER |
|--|--------------|---------------|----------------------|
| Direct addition + 19 liters water                          | T° > 30 °C   | 60 ml         | 150 ml               |
|  | 21 °C–30 °C  | 38 ml         | 100 ml               |
|  | 11 °C–20 °C  | 15 ml         | 60 ml                |
|  | T° < 10 °C   | 10 ml         | 30 ml                |
| Pre-mix with 1,000 liters water<br>(ready-to-use solution) | T° > 30 °C   | 1500 ml       | 8.2l                 |
|  | 21 °C–30 °C  | 900 ml        | 5.5l                 |
|  | 11 °C–20 °C  | 750 ml        | 3.2l                 |
|  | T° < 10 °C   | 350 ml        | 1.6l                 |

## AVAILABLE SCENTS

- Mulberry
- Cherry
- Bubble Gum
- Exotic
- Black Forest
- Candy

## PACKAGING SIZES

- 30 liters canister
- 210 liters drum
- 1.041 liters IBC





# GLO:PACK

Optimized for heat & heavy use



# GLO:PACK BIO

Enzyme-based – optimized for equipment & sewage treatment plants



## ADVANTAGES

- Pre-portioned powder sachets
- Bio – sewage treatment plant friendly & gentle on equipment
- Precisely portioned – no over or under-dosing
- Quick application without measuring
- Fast dissolution thanks to active oxygen
- Long shelf life & high fragrance stability
- Ideal for service personnel, events & sewage treatment plants
- Clean & safe solution for every application

## PACKAGING SIZES

- 80/100 sachets in bag
- 5 bags in box (500 pieces per box)

## AVAILABLE SCENTS

- Cherry
- Bubble Gum
- Red Berry

## GLO:PACK EVENT/GLO:PACK WINTER

Maximum odor control in cold weather & heavy use



# GLO:GRAFFITI-EX & CLEANING

Cleaning that saves time  
Clean cabins with less effort – directly during service.



## GLO:GRAFFITI-EX

This powerful, environmentally friendly liquid gel was specially developed for the effective removal of spray paints, permanent markers (e.g. Edding) and chemically resistant paints. The innovative formulation based on natural ingredients ensures reliable cleaning performance while being gentle on materials and the environment.

Thanks to its gel-like consistency, the product adheres optimally even on vertical surfaces without running.



## GLO:MAGIC SPONGE

Removes stubborn dirt and graffiti from cabin walls and many other surfaces quickly and easily.

**Without chemical cleaners.** The Magic Sponge works completely without cleaning agents and has the highest durability! Due to the innovative material with 2.5x higher density of 20 kg/m<sup>3</sup> instead of 8 kg/m<sup>3</sup>, it is the most durable magic sponge on the market.

Prüfengel certified!



## GLO:CLEANY

4-in-1 graffiti & cleaning wipes – powerful, gentle, efficient

The ready-to-use cleaning wipes feature a soft as well as a lightly abrasive surface for optimal cleaning results. The highly effective citrus-based liquid formula penetrates deep into the surface, reliably removes paint, marker, adhesives and graffiti and binds the residues in the wipe – without redistributing them on the cleaned surface. Ideally suited for smooth surfaces such as plastic and steel, the wipes clean effectively without scratching.



## GLO:KALK-EX

This specially developed limescale remover reliably removes stubborn limescale and urine stone deposits from plastic urinals in mobile toilet cabins. The material-friendly formula works quickly without attacking the plastic and ensures visibly clean surfaces as well as improved hygiene.

Ideal for professional use, the product reduces cleaning effort and extends the lifespan of urinals – for cleaner cabins, more satisfied users and more efficient service intervals.



# GLO:FRESH

Perfume & fragrance booster  
Long-lasting fragrance. Maximum odor control.



GLO:FRESH is a highly effective, oil-based fragrance and odor neutralizer based on natural essences – developed for professional use in mobile sanitary systems. Thanks to its oil-containing formulation, the fragrance adheres particularly long and ensures constant, reliable odor control throughout the entire service cycle.

The biocide-free formula makes GLO:FRESH fully compatible with GLO:BLUE Bio and other biological sanitary concentrates. At the same time, GLO:FRESH can be used flexibly as a fragrance booster for GLO:BLUE to specifically increase the fragrance intensity – exactly when it is required.

Compared to conventional fragrance discs, GLO:FRESH is more efficient, more cost-effective and significantly more environmentally friendly – without waste, without unnecessary Deodorizer, with 100 % odor control.

## PACKAGING SIZES

- 1 liter
- 30 liters canister
- 210 liters drum

## AVAILABLE SCENTS

- Cherry
- Black Forest
- Exotic
- Mulberry
- Bubble Gum

## HAND DISINFECTION & SOAP (FOAMING)

Hygiene that convinces – with minimal consumption  
Highly effective foam hand disinfectant with broad-spectrum effect, alcohol-based with proven fully virucidal action.

- Foaming application (approx. 1,400 applications)
- Refill systems
- Skin-friendly
- Proven hypoallergenic composition
- User-friendly
- Contains moisturizing ingredients

Perfume and dye-free, skin-hypoallergenic foam soap for professional use with additional moisturizers that washes away over 99 % of dirt and germs.

**Compatible with matching dispenser unit.**

## PACKAGING SIZES

- 1 box = 6 cartridges of 1 liter each



# GLOBAL SALES TEAM



## TOBIAS ZAHN

Sales Manager Germany & Switzerland

E-mail [t.zahn@glo-bal.de](mailto:t.zahn@glo-bal.de)

Mobile +49 170 7000 758



## MARGOT LÖWE

Inside Sales

E-mail [m.loewe@glo-bal.de](mailto:m.loewe@glo-bal.de)

Phone +49 3431 607 5589



## ANNE-GAËLLE FAVARON

Sales Manager International

E-mail [a.favaron@glo-bal.de](mailto:a.favaron@glo-bal.de)

Mobile +33 686 9020 63



## MARINA BAUER

Inside Sales

E-mail [m.bauer@glo-bal.de](mailto:m.bauer@glo-bal.de)

Phone +49 34903 64243



## ADRIAN TÜMMEL GOMEZ

Sales Manager International

E-mail [a.tummel@glo-bal.de](mailto:a.tummel@glo-bal.de)

Phone +49 151 2450 5730



## KONSTANTIN KRÜGER

Inside Sales

E-mail [k.krueger@glo-bal.de](mailto:k.krueger@glo-bal.de)

Phone +49 34903 64243



## PAWEŁ CHWEDORUK

Export Manager CEE

E-mail [p.chwedoruk@glo-bal.de](mailto:p.chwedoruk@glo-bal.de)

Mobile +49 175 1127 467



## FRANZ FUCHS

Head of Sales

E-mail [f.fuchs@glo-bal.de](mailto:f.fuchs@glo-bal.de)

Mobile +49 151 2253 2219



## NICOLE HECKER-COUNTRYMAN

Sales Manager Deodorizer

E-mail [n.hecker@glo-bal.de](mailto:n.hecker@glo-bal.de)

Mobile +49 151 2586 106



## JORGO MEYHÖFER

CEO

E-mail [info@glo-bal.de](mailto:info@glo-bal.de)

Phone +49 34903 64243



## RONNY SEIDLICH

Sales Manager Austria &  
Head of Inside Sales

E-mail [r.seidlich@glo-bal.de](mailto:r.seidlich@glo-bal.de)

Mobile +49 176 5788 6405

## GLOBAL SALES PARTNERS

### HYRTOALETTEN



Phone +46 31 706 06 07

E-mail [info@hyrtoaletten.se](mailto:info@hyrtoaletten.se)

Web [www.hyrtoaletten.se](http://www.hyrtoaletten.se)

### EUROPEWAGON



Phone +31 183 745 034

E-mail [info@europewagon.nl](mailto:info@europewagon.nl)

Web [europewagon.nl](http://europewagon.nl)

### EKOTORRE DISTRIBUTION



Phone +39 351 99 30 286

E-mail [commerciale@ekotorredistribution.com](mailto:commerciale@ekotorredistribution.com)

Web [www.ekotorredistribution.com](http://www.ekotorredistribution.com)

### PLASTIC SOLUTIONS



Phone +44 0800 334 5742

E-mail [sales@plasticsol.com](mailto:sales@plasticsol.com)

Web [www.plasticsol.com](http://www.plasticsol.com)

### BDT INTERNATIONAL



Phone +1 5149 722 479

E-mail [info@bdtinternational.ca](mailto:info@bdtinternational.ca)

Web [www.bdtinternational.ca](http://www.bdtinternational.ca)

### LAPORTA



Phone +34 900 001 006

E-mail [info@alquilerdemaquinaria.net](mailto:info@alquilerdemaquinaria.net)

Web [alquilerdemaquinaria.net](http://alquilerdemaquinaria.net)









## GLOBAL FLIEGENSCHMIDT

GLOBAL Fliegenschmidt GmbH  
Am Wasserturm 2  
06869 Coswig (Anhalt)  
Germany

Phone: +49 34903 64243

E-mail: [sales@glo-bal.de](mailto:sales@glo-bal.de)

Web: [www.glo-bal.de](http://www.glo-bal.de)

GLOBAL Fahrzeugtechnik GmbH  
Zschepplitzer Str. 22  
04720 Döbeln  
Germany

Phone: +49 3431 607 5589