

 **GLOBAL**
FLIEGENSCHMIDT



MOBILE SANITARY SYSTEMS

CONTENTS

MOBILE SANITARY SYSTEMS FROM COSWIG (ANHALT) 3

MODERN THERMOFORMING PRODUCTION 4

PORTABLE TOILETS 5

GLOBAL FOCUS	6
GLOBAL MTM	8
GLOBAL POLAR BASIC	9
GLOBAL POLAR BALTIC	10
GLOBAL POLAR FRESH	11

URINALS AND HAND WASH STATIONS 12

GLO:PEE	14
LAPEE	15
GLOBAL DUO	16
HYGIENE-KIT DUO	17

INSTALLATION TANKS AND HAND WASHING STANDS 18

GLOBAL EKKO	20
GLOBAL KOMBO	21
GLOBAL FRESH FLUSH	22
GLOBAL 250L	22
GLOBAL 320L	22
GLOBAL REZI F	22
GLOBAL FLEXITANK	23
GLOBAL MULTI	23

DEODORIZER, CLEANERS, HYGIENE AND

AIR FRESHENERS 24

GLO:BLUE	26
GLO:EVENT/GLO:WINTER	26
GLO:PACK	27
GLO:PACK EVENT/GLO:PACK WINTER	27
GLO:PACK BIO	27
GLO:GRAFFITI-EX	28
GLO:MAGIC SPONGE	28
GLO:KALK-EX	28
GLO:CLEANY	28
GLO:FRESH	29
HAND DISINFECTION & SOAP (FOAMING)	29

GLOBAL SALES TEAM 30



MOBILE SANITARY SYSTEMS FROM COSWIG (ANHALT)

PORTABLE TOILETS	5	DEODORIZER, CLEANERS, HYGIENE AND	
URINALS AND HAND WASH STATIONS	12	AIR FRESHENERS	24
INSTALLATION TANKS AND			
HAND WASHING STANDS	18		



MODERN THERMOFORMING PRODUCTION

CUTTING-EDGE TECHNOLOGY

We use state-of-the-art equipment from Geiss and COMI in our thermoforming production lines, leading to cost-efficient production of large-area plastic parts, high quality and increased throughput so that production peaks can also be better absorbed.

LIGHTWEIGHT MATERIAL

We use HDPE (High-Density Polyethylene) as the primary material for production. Due to its product properties, such as high stability and tear resistance, HDPE enables us to realize very thin wall thicknesses, leading to weight savings and, for example, lower transport costs.

HIGH DURABILITY

The HDPE components produced for our portable toilets are highly resistant to acids, alkalis and other chemicals such as cleaning agents, which makes cleaning the surfaces very straightforward.

SUSTAINABILITY

With our large solar system on the production hall, we produce our own electricity, and we recycle 100 percent of all clean production residues into new raw material in our new shredder plant.



We produce with solar energy!

Up to **40%** recycled content

PORTABLE TOILETS

GLOBAL FOCUS	6	GLOBAL POLAR BALTIC	10
GLOBAL MTM	8	GLOBAL POLAR FRESH	11
GLOBAL POLAR BASIC	9		



FOCUS



MTM



POLAR BASIC



POLAR BALTIC



POLAR FRESH

SPECIFICATIONS

	FOCUS	MTM	POLAR BASIC	POLAR BALTIC	POLAR FRESH
Interior height			2150 mm	2150 mm	2150 mm
Exterior height	2300 mm	2200 mm	2400 mm	2400 mm	2400 mm
Interior width			1050 mm	1050 mm	1050 mm
Exterior width	1100 mm	1100 mm	1140 mm	1140 mm	1140 mm
Interior depth			1050 mm	1050 mm	1050 mm
Exterior depth	1200 mm	1200 mm	1210 mm	1210 mm	1210 mm
Weight	72 kg	77,5 kg	approx. 140 kg	approx. 150 kg	approx. 190 kg
Material	UV-resistant polyethylene		Sandwich panels		

STANDARD CONFIGURATION

	FOCUS	MTM	POLAR BASIC	POLAR BALTIC	POLAR FRESH
Plastic tank GLOBAL 250L	■	■	■	■	□
Wall-mounted toilet, ceramic	□	□	□	□	■
Washbasin, ceramic	□	□	□	□	■
Hand wash stand GLOBAL Ekko	□	□	□	■	□
Urinal	■	■	□	■	□
Door latch	■	■	□	□	□
Hover handle	□	■	□	□	□
Mirror, glass	□	□	■	■	■
Mirror, metal	■	■	□	□	□
Paper roll holder	■	■	■	■	■
Occupied/vacant indicator	■	■	□	□	□
Plastic pallet	■	■	■	■	■
Door lock padlock	■	■	□	□	□
Door lock key	□	□	■	■	■
230 V Power connection	□	□	□	■	■
Lighting with motion sensor	□	□	■	■	■
Heating 500 W	□	□	■	■	■
Fresh water connection 3/4"	□	□	□	□	■
Waste water connection DN110	□	□	□	□	■

GLOBAL FOCUS

- 01 NEW ROOF DESIGN**
for better securing with lashing straps and handle
for easier moving and loading
- 02 EXTREMELY DURABLE DOOR SPRING**
tested over 30,000 times, easy to replace
- 03 WIDER AND HIGHER DOOR**
more accessible and user-friendly
- 04 ADJUSTABLE CLOSING MECHANISM**
practical in strong winds
- 05 REDESIGNED PALLET**
more stable, more durable, easier to clean



**MADE IN
COSWIG
GERMANY**

DIN
EN 16914

**LIGHT
WEIGHT
PE.**



The new evolutionary stage of our portable toilets. A completely new design with a focus on better handling, easier transport, higher durability and improved details.

SPECIFICATIONS

Height:	2300 mm
Width:	1100 mm
Depth:	1200 mm
Weight:	72 kg
Material:	UV-resistant polyethylene

STANDARD CONFIGURATION

Urinal, tank GLOBAL 250L, plastic pallet, translucent roof, self-closing door with occupied/vacant indicator, lockable from the outside, black corner strips

AVAILABLE COLORS

GLOBAL Blue, light blue, dark green, light green, red, yellow, orange, purple, pink, sand, aqua, light gray, dark gray, white



TRANSPORT HANDLE
for easier handling



FOOT TREADLE
for easier tipping



HEAVY-DUTY HINGES
now easier to install and more durable



CLOSING MECHANISM
all-new design and adjustable



NEW DOOR
wider, higher and more sturdy



REVISED DETAILS
for better handling and more comfort



GLOBAL MTM



- 01 REINFORCED FRONT**
robust, even under heavy use
- 02 PERIMETER DOOR FRAME**
provides increased stability
- 03 LARGE DOOR LATCH**
can be operated without using the hands
- 04 SMOOTH OUTER SURFACE**
for easy attachment of advertising
- 05 YOUR LOGO**
can be molded into the side panels



MADE IN
COSWIG
GERMANY

DIN
EN 16914

LIGHT
WEIGHT
PE.



Rugged construction and compact design makes the cabin perfect for heavy-duty applications such as construction sites and festivals.

SPECIFICATIONS

Height:	2200 mm
Width:	1100 mm
Depth:	1200 mm
Weight:	77,5 kg
Material:	UV-resistant polyethylene

STANDARD CONFIGURATION

Urinal, tank GLOBAL 250L, plastic pallet, translucent roof, self-closing door with occupied/vacant indicator, lockable from the outside, black/white corner strips

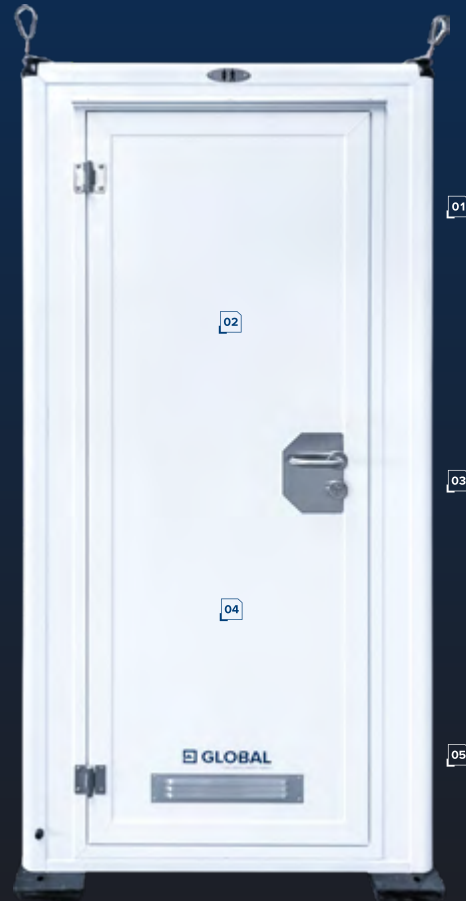
AVAILABLE COLORS

GLOBAL Blue, light blue, dark green, light green, red, yellow, orange, purple, pink, sand, aqua, light gray, dark gray, white



GLOBAL POLAR BASIC

- 01 CONNECTION-FREE, AUTARKIC OPERATION**
using lightweight plastic tanks
- 02 ISOLATED CABIN**
with 33 mm thick sandwich panels made in-house
- 03 500 W HEATER**
in standard configuration
- 04 BATTERY-OPERATED LIGHTING**
with motion sensor
- 05 SMOOTH OUTER SURFACE**
for easy attachment of advertising



**MADE IN
DÖBELN
GERMANY**

DIN
EN 16914



A cost-effective and lightweight version of an isolated portable toilet. Equipped with a lightweight plastic tank for connection-free operation.

SPECIFICATIONS

Height:	2400 mm
Width:	1140 mm
Depth:	1210 mm
Weight:	approx. 140 kg
Material:	Sandwich panels, 33 mm Wall thickness

STANDARD CONFIGURATION

Tank GLOBAL 250L, plastic pallet, paper roll holder, mirror, 500W heating

AVAILABLE COLORS

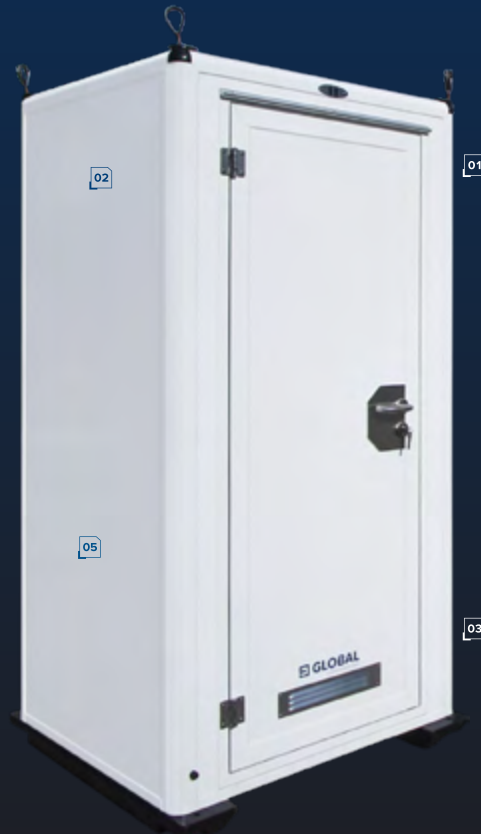
White

GLOBAL POLAR BALTIC

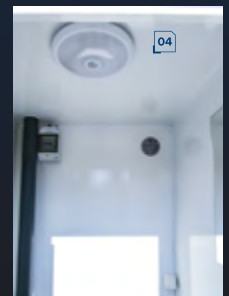


DIN
EN 16914

- 01 CONNECTION-FREE, AUTARKIC OPERATION**
using lightweight plastic tanks
- 02 ISOLATED CABIN**
with 33 mm thick sandwich panels made in-house
- 03 500 W HEATER**
in standard configuration
- 04 LIGHTING 230 V**
with motion sensor
- 05 SMOOTH OUTER SURFACE**
for easy attachment of advertising



Also available
with GLOBAL Rezi F
recirculation tank!



Model version with a lightweight 250 liter plastic tank for connection-free operation, hand washing facility, urinal and 500W heating.

SPECIFICATIONS

Height:	2400 mm
Width:	1140 mm
Depth:	1210 mm
Weight:	approx. 150 kg
Material:	Sandwich panels, 33 mm Wall thickness

STANDARD CONFIGURATION

Urinal, tank GLOBAL 250L, GLOBAL Ekko hand washing stand, plastic pallet, paper roll holder, mirror, 500W heating, 230 V power connection, lighting with motion sensor

AVAILABLE COLORS

White

GLOBAL POLAR FRESH

MADE IN
DÖBELN
GERMANY

DIN
EN 16914

- 01 FRESH WATER CONNECTION**
and ceramic fittings for more comfort
- 02 ISOLATED CABIN**
with 33 mm thick sandwich panels made in-house
- 03 500 W HEATER**
in standard configuration
- 04 DEKRA-APPROVED CRANE HOOKS**
ensure safe and fast loading
- 05 SMOOTH OUTER SURFACE**
for easy attachment of advertising



The premium version of our GLOBAL Polar portable toilet. Equipped with a toilet and ceramic washbasin, electric and fresh water connections, and heating. Perfect for customers with high standards.

SPECIFICATIONS

Height:	2400 mm
Width:	1140 mm
Depth:	1210 mm
Weight:	approx. 190 kg
Material:	Sandwich panels, 33 mm Wall thickness

STANDARD CONFIGURATION

Wall-hung ceramic toilet and washbasin, mirror, toilet paper holder, toilet brush, fresh water/waste water/electricity connection, 500W heating

AVAILABLE COLORS

White

URINALS AND HAND WASH STATIONS

GLO:PEE

14

GLOBAL DUO

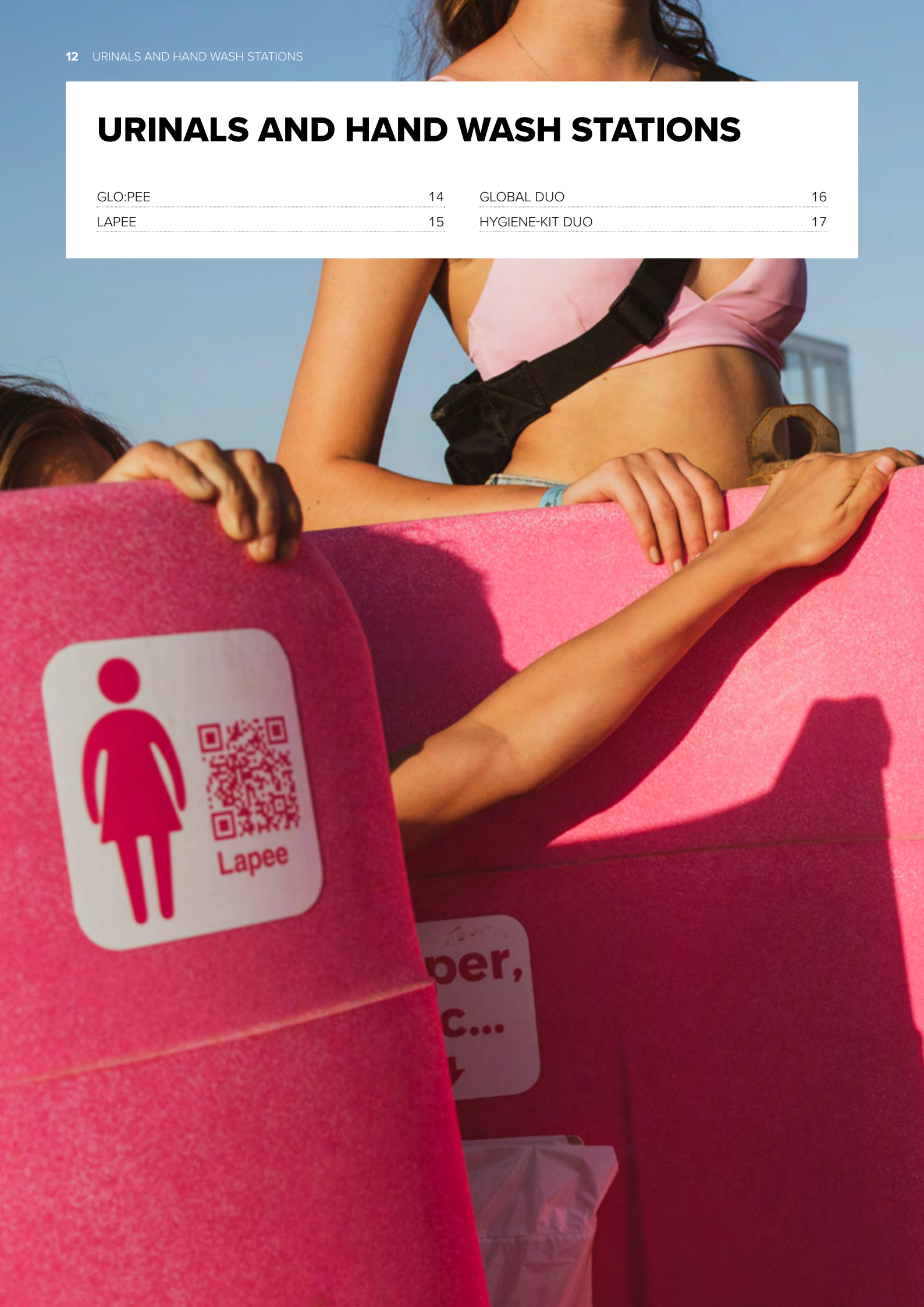
16

LAPEE

15

HYGIENE-KIT DUO

17





GLO:PEE



LAPEE



DUO

SPECIFICATIONS

Height	1750 mm	1700 mm	1150 mm
Width	1200 mm	2250 mm	1100 mm
Depth	1200 mm	2250 mm	600 mm
Weight	40 kg	200 kg	40 kg
Capacity fresh water	—	—	160l
Capacity waste water	400l	1100l	160l
Material	UV-resistant polyethylene		

PRODUCT FEATURES

Stackable for transportation	■	■	■
------------------------------	---	---	---

GLO:PEE

- 01** ENHANCED PRIVACY
through a revised design
- 02** SPACE FOR 4 PEOPLE AT ONE URINAL
for a higher throughput
- 03** DRINKS HOLDERS
so that the really important things don't get spilt
- 04** TWO-PART DESIGN
for space- and cost-saving transportation, and
stackable in 4 layers without jamming
- 05** 400 LITER WASTE WATER TANK
for longer periods of use
- 06** LOCKING MECHANISM
with square key



MADE IN
COSWIG
GERMANY

LIGHT
WEIGHT
PE.



Free-standing urinal in a fresh design with space for four users and drink holders. The eye-catcher at every festival and event. Space-saving transport thanks to its two-part and stackable design.

SPECIFICATIONS

Height: 1750 mm
 Width: 1200 mm
 Depth: 1200 mm
 Weight: 40 kg
 Material: UV-resistant polyethylene

AVAILABLE COLORS

GLOBAL Blue, light blue, dark green, light green, red, yellow, orange, purple, pink, sand, aqua, light gray, dark gray, white

LAPEE



LIGHT
WEIGHT
PE.

- 01** 3 SPACES PER URINAL
for high throughput
- 02** REDUCING WAITING TIMES
in the ladies' toilets
- 03** STACKABLE
for space- and cost-saving transportation
- 04** NOT OBSERVABLE
when used to protect privacy



Lapee is based on the vision of providing women with better sanitary conditions when other toilets are overcrowded. The urinal, with its modern design, offers space for three female users and can also be stacked for transportation.

SPECIFICATIONS

Height:	1700 mm
Width:	2250 mm
Depth:	2250 mm
Weight:	200 kg
Material:	UV-resistant polyethylene

AVAILABLE COLORS

Pink

GLOBAL DUO



LIGHT WEIGHT
PE.

- 01** TWO WASHBASINS
- 02** EASY-TO-CLEAN WATER TANKS
that are easy to remove
- 03** STACKABLE IN TWO
enables transportation of 4 GLOBAL Duo per
cabin space
- 04** ROBUST CARRYING HANDLES
for better handling and load securing
- 05** HIGH-QUALITY FOOT PUMP
for managing the water flow



Free-standing, portable hand washing station with space for two users at the same time. With integrated handles that also serve to secure the load. Stackable for transport, four GLOBAL Duo can be effectively transported in the space of a portable toilet.

SPECIFICATIONS

Height:	1150 mm
Width:	1100 mm
Depth:	800 mm
Capacity fresh water:	160l
Capacity waste water:	160l
Weight:	40 kg
Material:	UV-resistant polyethylene

STANDARD CONFIGURATION

Soap dispenser, removable tanks, padlock

AVAILABLE COLORS

Gray

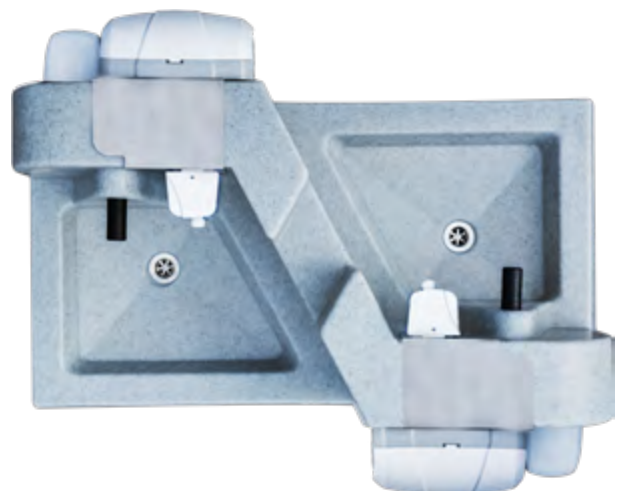
HYGIENE-KIT DUO



- 01 EASY RETROFITTING**
for every GLOBAL Duo hand washing station
- 02 SPACE-SAVING TRANSPORTATION**
in the tanks of the hand washing station
- 03 THOROUGH HYGIENE**
with soap dispenser, disinfectant dispenser and paper towel dispenser

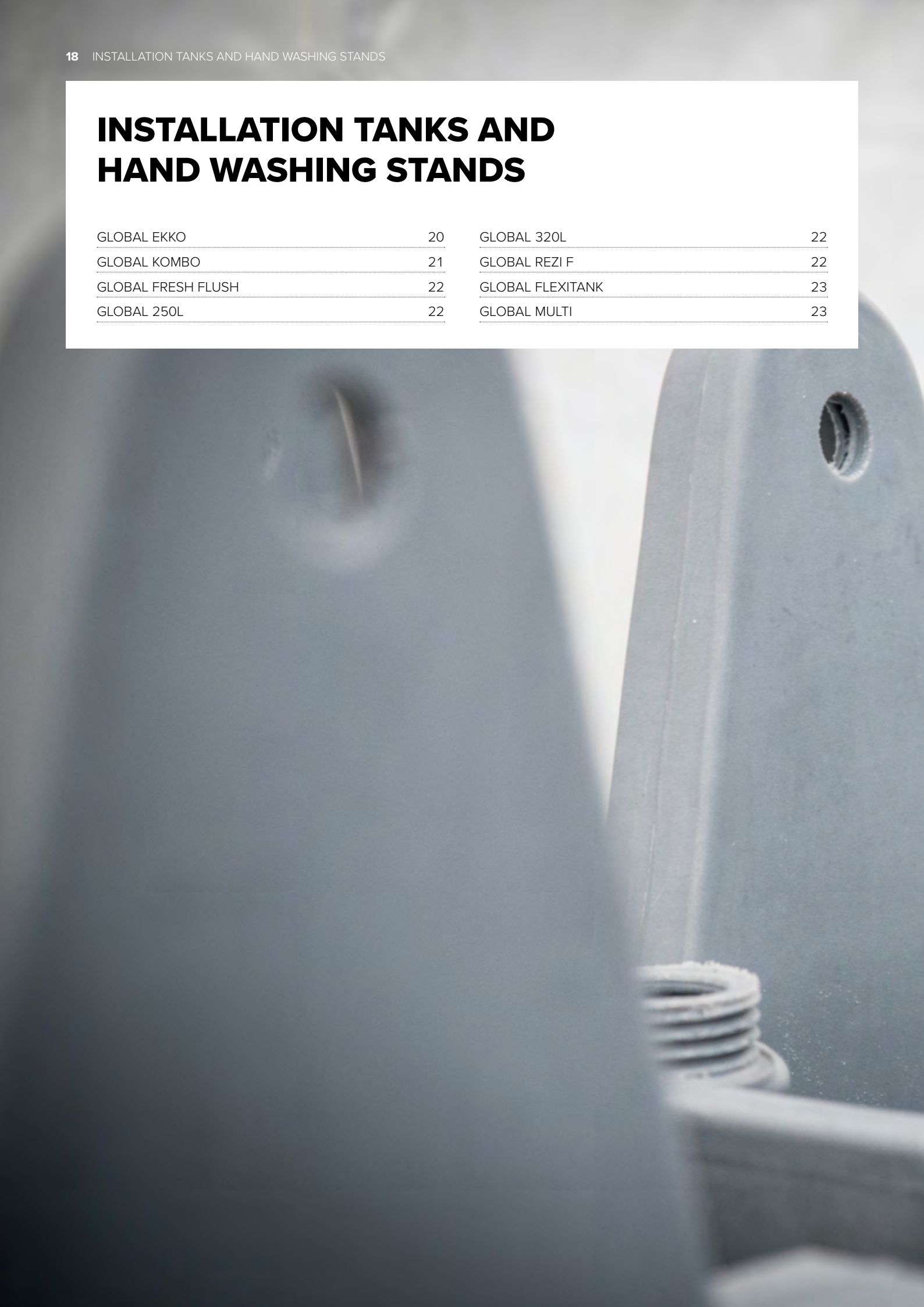


The retrofit kit consists of a soap dispenser, a disinfectant dispenser and a paper towel dispenser and can be securely attached to any GLOBAL Duo with a wing screw.



INSTALLATION TANKS AND HAND WASHING STANDS

GLOBAL EKKO	20	GLOBAL 320L	22
GLOBAL KOMBO	21	GLOBAL REZI F	22
GLOBAL FRESH FLUSH	22	GLOBAL FLEXITANK	23
GLOBAL 250L	22	GLOBAL MULTI	23





EKKO



KOMBO



250L



320L

SPECIFICATIONS

Height	1200 mm	1200 mm	520 mm	520 mm
Width	600 mm	900 mm	1040 mm	1040 mm
Depth	250 mm	250 mm	600 mm	600 mm
Weight	9 kg	9 kg	14 kg	14 kg
Capacity fresh water	35l	45l	—	—
Capacity waste water	—	—	250l	320l
Material	UV-resistant polyethylene			

AVAILABLE IN

Gray	■	■	■	□
Granite	■	■	■	■



FRESH FLUSH



REZI F



MULTI



FLEXITANK

SPECIFICATIONS

Height	1200 mm	615 mm	520 mm	500 mm
Width	1040 mm	1030 mm	1040 mm	700 mm
Depth	1000 mm	640 mm	620 mm	550 mm
Weight	22 kg	14 kg	14 kg	10 kg
Capacity fresh water	100l	—	—	—
Capacity waste water	200l	185l	180l	110l
Material	UV-resistant polyethylene			

AVAILABLE IN

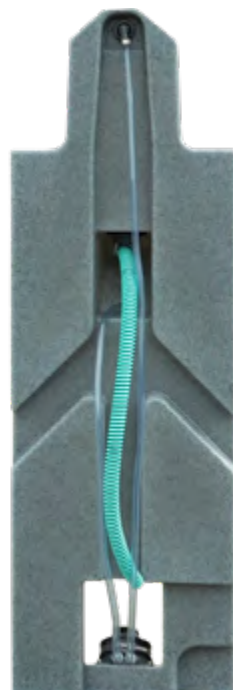
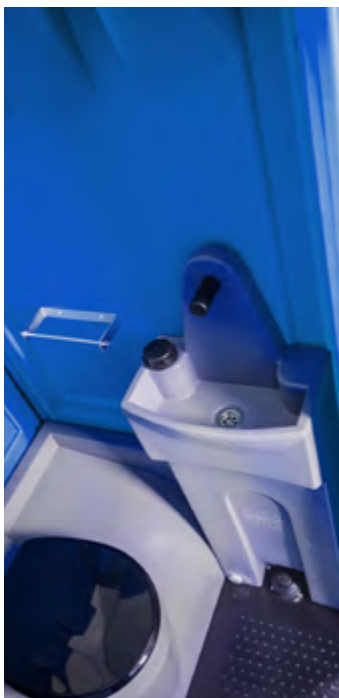
Gray	□	■	■	■
Granite	■	□	□	■

GLOBAL EKKO

MADE IN
COSWIG
GERMANY

LIGHT
WEIGHT
PE.

- 01 SLIM DESIGN**
allows flexible positioning in the toilet cabin
- 02 HYGIENIC OPERATION**
via high-quality foot pump
- 03 EASY FILLING**
via the filler neck positioned at the top of the 35-liter fresh water tank
- 04 WASTE WATER**
drains directly into the toilet tank



Slim hand washing stand for installation in portable toilets. Operated by a high-quality foot pump, waste water is drained directly into the toilet tank.

SPECIFICATIONS

Height:	1200 mm
Width:	385 mm
Depth:	250 mm
Weight:	9 kg
Capacity:	35 l
Material:	UV-resistant polyethylene

AVAILABLE COLORS

Gray, Granite

GLOBAL KOMBO

MADE IN
COSWIG
GERMANY

LIGHT
WEIGHT
PE.

- 01** COMPACT DESIGN
for easy installation in portable toilets
- 02** HYGIENIC OPERATION
via high-quality foot pump
- 03** WATER-FLUSHED URINAL
for improved cleanliness
- 04** EASY FILLING
via the filler neck positioned at the top of the
45-liter fresh water tank
- 05** WASTE WATER
drains directly into the toilet tank



Space-saving 2-in-1 combination of hand washing stand and urinal. Operating the high-quality foot pump simultaneously flushes the urinal and allows you to wash your hands. Waste water is drained directly into the toilet tank.

SPECIFICATIONS

Height:	1200 mm
Width:	670 mm
Depth:	250 mm
Weight:	9 kg
Capacity:	45 l
Material:	UV-resistant polyethylene

AVAILABLE COLORS

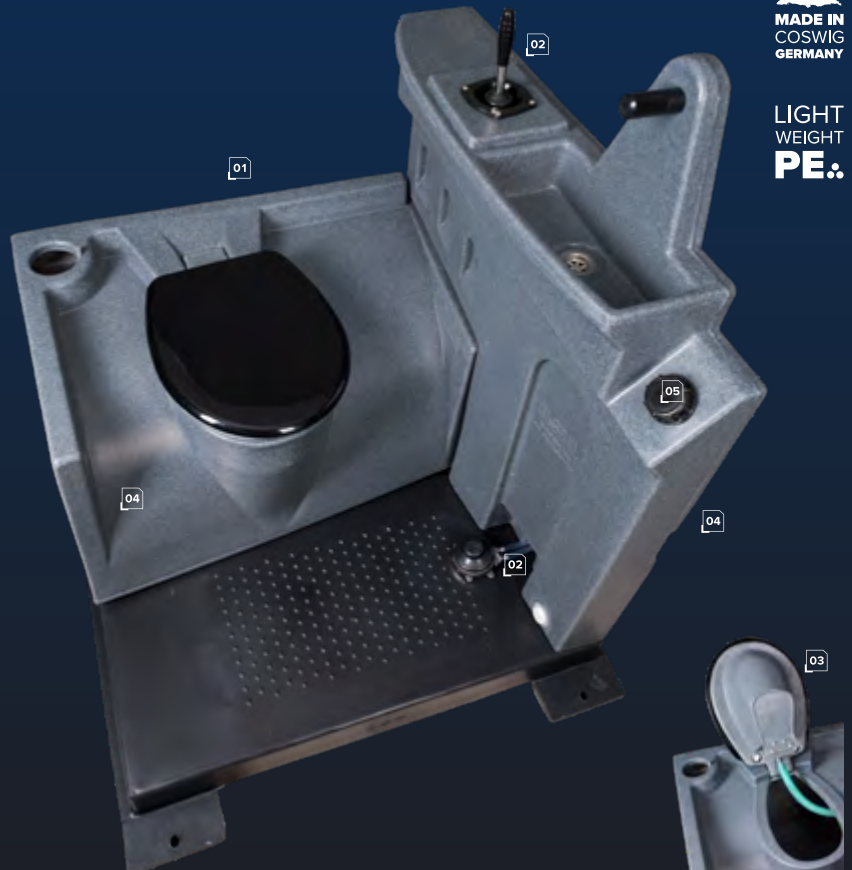
Gray, Granite

GLOBAL FRESH FLUSH

MADE IN
COSWIG
GERMANY

LIGHT
WEIGHT
PE.

- 01** 2 IN 1 COMBINATION
of fresh water flush tank and hand washing stand
- 02** FRESH WATER FLUSHING
via high-quality hand and foot pumps
- 03** TANK CONTENTS NOT VISIBLE
due to the sight guard in the toilet seat
- 04** SUFFICIENT CAPACITY
of 100 liters of fresh water and 200 liters of waste water
- 05** EASY FILLING
via the filler neck positioned at the top of the fresh water tank



GLOBAL 250L
Standard installation tank

- 250 liter capacity
- Recessed suction point
- Easy to clean
- Edgeless interior



GLOBAL 320L
Large installation tank

- 320 liter capacity
- Longer cleaning intervals
- Recessed suction point
- Easy to clean
- Edgeless interior



GLOBAL REZI F
Recirculation tank with foot pump

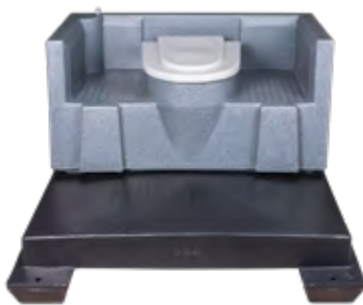
- 185 liter capacity
- High-quality foot pump
- Privacy screen prevents tank viewing
- Recessed suction point
- Easy to clean
- Edgeless interior

GLOBAL FLEXITANK

MADE IN
COSWIG
GERMANY

LIGHT
WEIGHT
PE.

- 01 EASY TO TRANSPORT**
even to hard-to-reach places
- 02 FLEXIBLE USE**
inside and outside portable toilets
- 03 CAN BE SEALED FOR TRANSPORTATION**
with rubber lid
- 04 SUFFICIENT CAPACITY**
for 110 liters of waste water



GLOBAL MULTI

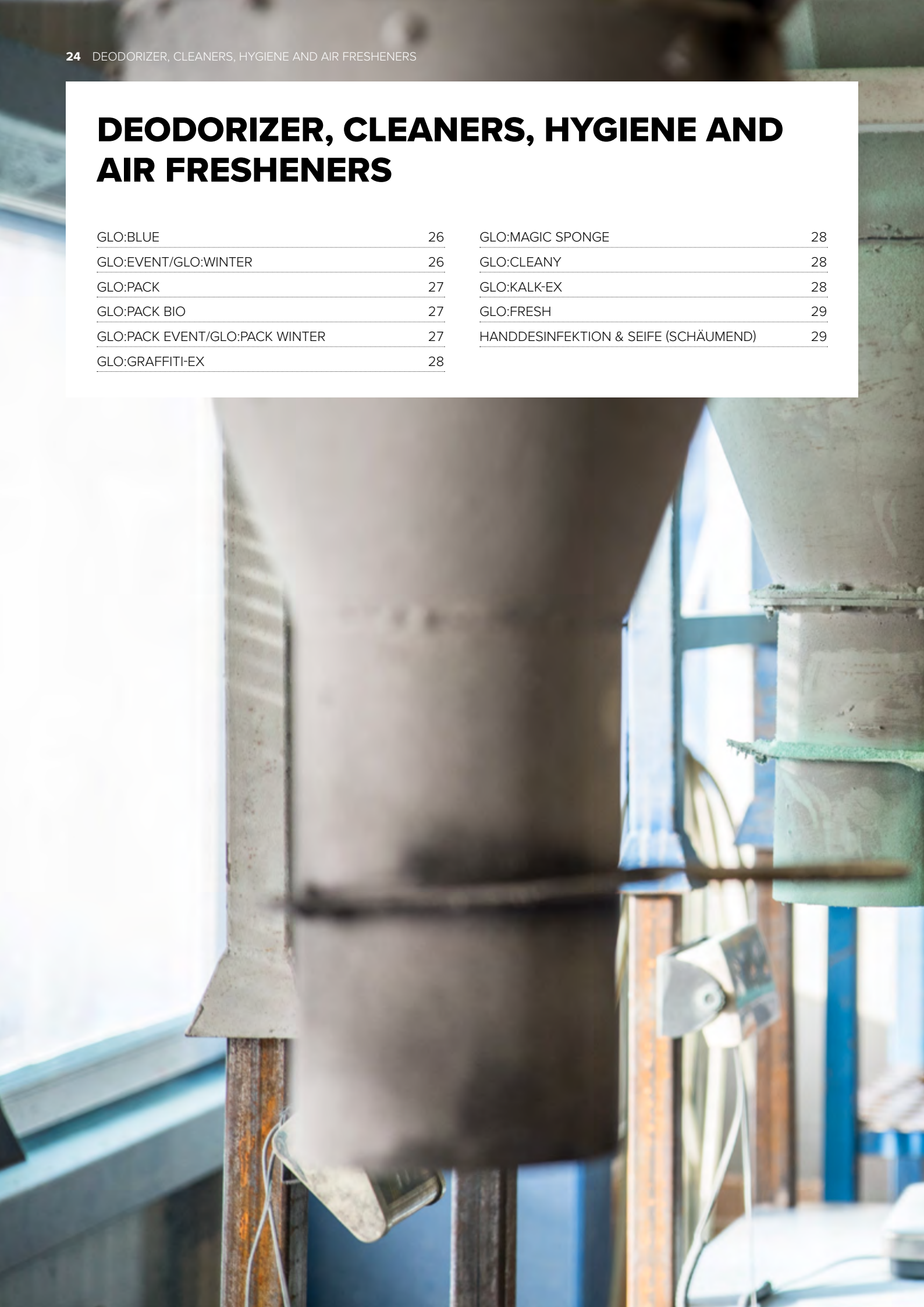
Tank for squat and sit use

- 180 liter capacity
- Non-slip surface
- Recessed suction point
- Easy to clean
- Edgeless interior

Technical modifications possible.
Illustrations may show special equipment

DEODORIZER, CLEANERS, HYGIENE AND AIR FRESHENERS

GLO:BLUE	26	GLO:MAGIC SPONGE	28
GLO:EVENT/GLO:WINTER	26	GLO:CLEANY	28
GLO:PACK	27	GLO:KALK-EX	28
GLO:PACK BIO	27	GLO:FRESH	29
GLO:PACK EVENT/GLO:PACK WINTER	27	HANDDESINFEKTION & SEIFE (SCHÄUMEND)	29
GLO:GRAFFITI-EX	28		





GLO:BLUE EASY



GLO:EVENT/
GLO:WINTER



GLO:PACK



GLO:FRESH



GLO:KALKEX



GLO:GRAFFITI-EX

SCENTS

Cherry	■	□	■	■	□	□
Bubble Gum	■	□	■	■	□	□
Mulberry	■	□	□	■	□	□
Black Forest	■	■	□	■	□	□
Candy	□	■	□	□		
Exotic	■	□	□	■	□	□
Red Berry	□	□	■	□	□	□
Neutral	□	□	□	□	■	■

PACKAGING SIZES

0,5 liters	□	□	□	□	□	■
1 liter	□	□	□	■	□	□
30 liters (canister)	■	■	□	■	■	□
210 liters (drum)	■	■	□	■	□	□
1041 liters (IBC)	■	■	□	□	□	□
80/100 sachets (in bag)	□	□	■	□	□	□
500 sachets (in box)	□	□	■	□	□	□

GLO:BLUE

Liquid deodorizer.
Highly concentrated. Efficient.
Economical.

- ◆ GLO:BLUE EASY – HIGH CONCENTRATE
Can be used year-round, consistently effective at high temperatures and heavy use
- ◆ GLO:EVENT/GLO:WINTER
Higher fragrance content for heavy use, short event/service intervals or winter temperatures
- ◆ EXCELLENT ODOR CONTROL
- ◆ DEEP BLUE, WASHABLE COLOR
- ◆ 100 % BIODEGRADABLE



Recommended dosage	Temperatures	GLO:BLUE EASY	GLO:EVENT/GLO:WINTER
Direct addition + 19 liters water	T° > 30°C	60 ml	150 ml
	21°C–30°C	38 ml	100 ml
	11°C–20°C	15 ml	60 ml
	T° < 10°C	10 ml	30 ml
Pre-mix with 1,000 liters water (ready-to-use solution)	T° > 30°C	1500 ml	8.2 l
	21°C–30°C	900 ml	5.5 l
	11°C–20°C	750 ml	3.2 l
	T° < 10°C	350 ml	1.6 l

AVAILABLE SCENTS

- Mulberry
- Cherry
- Bubble Gum
- Exotic
- Black Forest
- Candy

PACKAGING SIZES

- 30 liters canister
- 210 liters drum
- 1.041 liters IBC



GLO:PACK

Optimized for heat & heavy use



GLO:PACK BIO

Enzyme-based – optimized for equipment & sewage treatment plants



ADVANTAGES

- Pre-portioned powder sachets
- Bio – sewage treatment plant friendly & gentle on equipment
- Precisely portioned – no over or under-dosing
- Quick application without measuring
- Fast dissolution thanks to active oxygen
- Long shelf life & high fragrance stability
- Ideal for service personnel, events & sewage treatment plants
- Clean & safe solution for every application

PACKAGING SIZES

- 80/100 sachets in bag
- 5 bags in box (500 pieces per box)

AVAILABLE SCENTS

- Cherry
- Bubble Gum
- Red Berry

GLO:PACK EVENT/GLO:PACK WINTER

Maximum odor control in cold weather & heavy use



GLO:GRAFFITI-EX & CLEANING

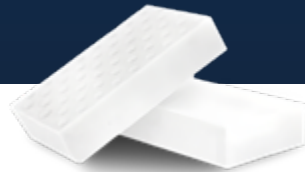
Cleaning that saves time
Clean cabins with less effort – directly during service.



GLO:GRAFFITI-EX

This powerful, environmentally friendly liquid gel was specially developed for the effective removal of spray paints, permanent markers (e.g. Edding) and chemically resistant paints. The innovative formulation based on natural ingredients ensures reliable cleaning performance while being gentle on materials and the environment.

Thanks to its gel-like consistency, the product adheres optimally even on vertical surfaces without running.



GLO:MAGIC SPONGE

Removes stubborn dirt and graffiti from cabin walls and many other surfaces quickly and easily.

Without chemical cleaners. The Magic Sponge works completely without cleaning agents and has the highest durability! Due to the innovative material with 2.5x higher density of 20 kg/m³ instead of 8 kg/m³, it is the most durable magic sponge on the market.

Prüfungsfertig!



GLO:CLEANY

4-in-1 graffiti & cleaning wipes – powerful, gentle, efficient

The ready-to-use cleaning wipes feature a soft as well as a lightly abrasive surface for optimal cleaning results. The highly effective citrus-based liquid formula penetrates deep into the surface, reliably removes paint, marker, adhesives and graffiti and binds the residues in the wipe – without redistributing them on the cleaned surface. Ideally suited for smooth surfaces such as plastic and steel, the wipes clean effectively without scratching.



GLO:KALK-EX

This specially developed limescale remover reliably removes stubborn limescale and urine stone deposits from plastic urinals in mobile toilet cabins. The material-friendly formula works quickly without attacking the plastic and ensures visibly clean surfaces as well as improved hygiene.

Ideal for professional use, the product reduces cleaning effort and extends the lifespan of urinals – for cleaner cabins, more satisfied users and more efficient service intervals.

GLO:FRESH

Perfume & fragrance booster
 Long-lasting fragrance. Maximum odor control.



GLO:FRESH is a highly effective, oil-based fragrance and odor neutralizer based on natural essences – developed for professional use in mobile sanitary systems. Thanks to its oil-containing formulation, the fragrance adheres particularly long and ensures constant, reliable odor control throughout the entire service cycle.

The biocide-free formula makes GLO:FRESH fully compatible with GLO:BLUE Bio and other biological sanitary concentrates. At the same time, GLO:FRESH can be used flexibly as a fragrance booster for GLO:BLUE to specifically increase the fragrance intensity – exactly when it is required.

Compared to conventional fragrance discs, GLO:FRESH is more efficient, more cost-effective and significantly more environmentally friendly – without waste, without unnecessary Deodorizer, with 100% odor control.

PACKAGING SIZES

- 1 liter
- 30 liters canister
- 210 liters drum

AVAILABLE SCENTS

- Cherry
- Black Forest
- Exotic
- Mulberry
- Bubble Gum

HAND DISINFECTION & SOAP (FOAMING)

Hygiene that convinces – with minimal consumption
 Highly effective foam hand disinfectant with broad-spectrum effect, alcohol-based with proven fully virucidal action.

- Foaming application (approx. 1,400 applications)
- Refill systems
- Skin-friendly
- Proven hypoallergenic composition
- User-friendly
- Contains moisturizing ingredients

Perfume and dye-free, skin-hypoallergenic foam soap for professional use with additional moisturizers that washes away over 99% of dirt and germs.

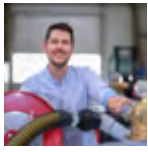
Compatible with matching dispenser unit.

PACKAGING SIZES

- 1 box = 6 cartridges of 1 liter each



GLOBAL SALES TEAM



TOBIAS ZAHN

Sales Manager Germany & Switzerland

E-mail t.zahn@glo-bal.de

Mobile +49 170 7000 758



MARGOT LÖWE

Inside Sales

E-mail m.loewe@glo-bal.de

Phone +49 3431 607 5589

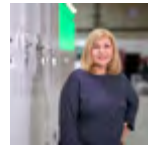


ANNE-GAËLLE FAVARON

Sales Manager International

E-mail a.favaron@glo-bal.de

Mobile +33 686 9020 63



MARINA BAUER

Inside Sales

E-mail m.bauer@glo-bal.de

Phone +49 34903 64243



ADRIAN TÜMMEL GOMEZ

Sales Manager International

E-mail a.tummel@glo-bal.de

Phone +49 151 2450 5730



KONSTANTIN KRÜGER

Inside Sales

E-mail k.krueger@glo-bal.de

Phone +49 34903 64243



PAWEŁ CHWEDORUK

Export Manager CEE

E-mail p.chwedoruk@glo-bal.de

Mobile +49 175 1127 467



FRANZ FUCHS

Head of Sales

E-mail f.fuchs@glo-bal.de

Mobile +49 151 2253 2219



NICOLE HECKER-COUNTRYMAN

Sales Manager Deodorizer

E-mail n.hecker@glo-bal.de

Mobile +49 151 2586 106



JORGO MEYHÖFER

CEO

E-mail info@glo-bal.de

Phone +49 34903 64243



RONNY SEIDLICH

Sales Manager Austria &
Head of Inside Sales

E-mail r.seidlich@glo-bal.de

Mobile +49 176 5788 6405

GLOBAL SALES PARTNERS

HYRTOALETTEN



Phone +46 31 706 06 07

E-mail info@hyrtoaletten.se

Web www.hyrtoaletten.se

EUROPEWAGON



Phone +31 183 745 034

E-mail info@europewagon.nl

Web europewagon.nl

EKOTORRE DISTRIBUTION



Phone +39 351 99 30 286

E-mail commerciale@ekotorredistribution.com

Web www.ekotorredistribution.com

PLASTIC SOLUTIONS



Phone +44 0800 334 5742

E-mail sales@plasticsol.com

Web www.plasticsol.com

BDT INTERNATIONAL



Phone +1 5149 722 479

E-mail info@bdtinternational.ca

Web www.bdtinternational.ca

LAPORTA

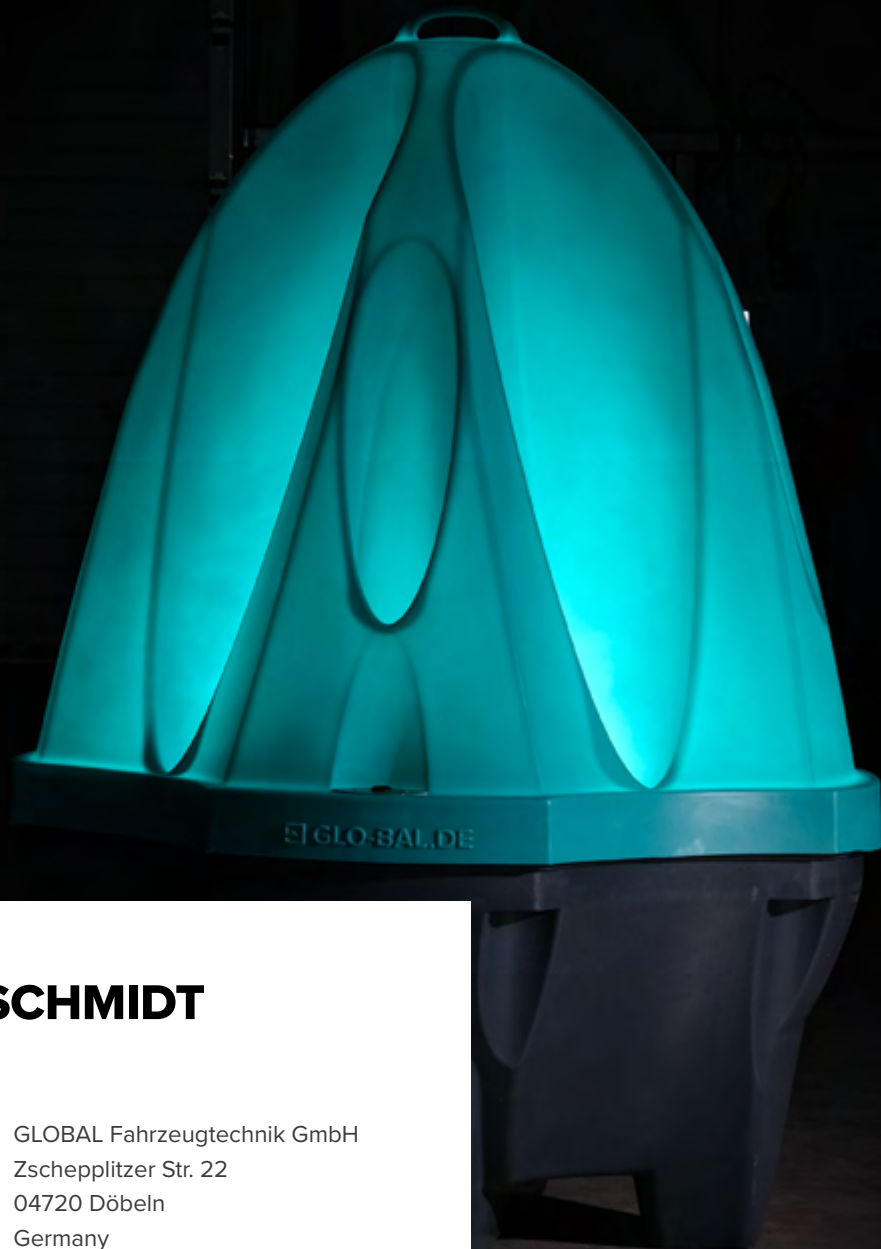


Phone +34 900 001 006

E-mail info@alquilerdemaquinaria.net

Web alquilerdemaquinaria.net





GLOBAL FLIEGENSCHMIDT

GLOBAL Fliegenschmidt GmbH
Am Wasserturm 2
06869 Coswig (Anhalt)
Germany

Phone: +49 34903 64243

E-mail: sales@glo-bal.de

Web: www.glo-bal.de

GLOBAL Fahrzeugtechnik GmbH
Zschepplitzer Str. 22
04720 Döbeln
Germany

Phone: +49 3431 607 5589